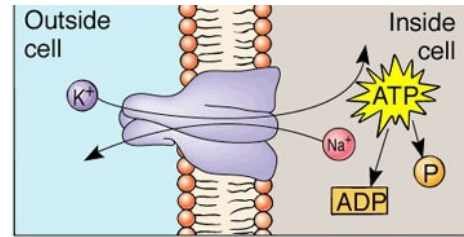
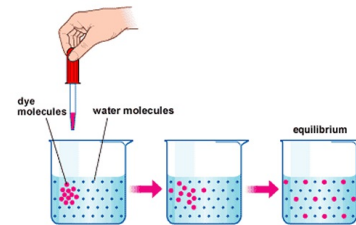


active transport



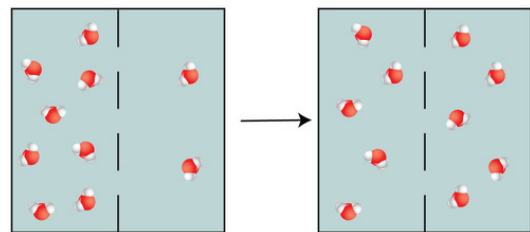
The movement of materials through a cell membrane using cellular energy

diffusion



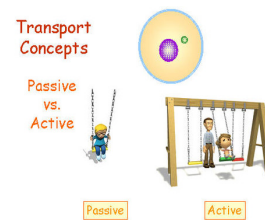
the process by which molecules move from an area of higher concentration to an area of lower concentration

osmosis



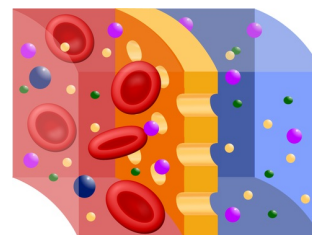
diffusion of water through a selectively permeable membrane

passive transport



The movement of materials through a cell membrane without using energy

selectively permeable



A property of cell membranes that allows some substances to pass through, while others cannot.